

Wireless Mini IP-PBX

FPX9102H



Highlights

Asterisk

5*10/100/1000Mbps RJ45 ports

1 USB port

2 FXO RJ11 port

Automatic configuration

802.11ac

OpenVPN

50 registered extensions

25 synchronous calls

Wireless Mini IP-PBX FPX9102H, based on Asterisk and Open WRT, is the newest product of Flyingvoice, which make focus on the needs of small and medium-sized domestic enterprises. It is an embedded IP phone system, Dual-Band network control and management in one device.

What is more, The IP Phone of Flyingvoice can achieve "plug and play" function when connect to



ULTRATIVE HK CO., LIMITED

E: sales@ultrative.com

T: +86-755-29630367

F: +86-755-29685231

http://www.ultrative.com

FPX9102H, the phone directly connected FPX9102H wired or wireless can easily achieve automatic configuration, and it provides a business Wireless IP Phone system that is adapted to the using of about 50 people.

FPX9102H manage your office's voice and data services at the same time, it not only provides efficient communication costs control, but also it can integrate existing sources of your office, help improve your working efficiency and enhance the competitiveness.

Key features

50 registered extensions

25 synchronous calls

10 people's telephone conference room

2 FXO ports providing analog trunk

SIP trunk and Skype trunk

50 hours' voicemail

5*10/100/1000M RJ45 ports, support DDNS, Wireless Office, Open VPN and QoS

Scalable capacity, support external storage devices, like U disk, removable hard disk and so on

Technical Parameters

FLASH	128M Nand Flash
Power supply	AC input: 100-240V, 56-60Hz DC Output: 12V, 1.5A
LED indicators	1 Internet led for indicating Internet connecting; 4 Ethernet led for indicting Ethernet connecting; 1 Power led for indicting Power connecting; 2 Wireless led for indicting Wireless opening(2.4G/5G);
Environmental	Operation Temperature: 0-45 degree C Storage Temperature: -25-85 degree C Relative Humidity: 10%-90% No Condensing Shock: Up to 75cm(30 inches)
I/O Interfaces	1 RJ45 for WAN port(10/100/1000M) 4 RJ45 for LAN ports(10/100/1000M) 1 USB port for 3G card and printer 2 RJ11 ports for FXO 1 button for rebooting and resetting default

Key Functions

Function	Explanation
----------	-------------



ULTRATIVE HK CO., LIMITED

E: sales@ultrative.com

T: +86-755-29630367

F: +86-755-29685231

http://www.ultrative.com

Make/Answer Calls	Free calls between the internal branches, low rates for international long distance calls through Skype or SIP providers.
Transfer	Attended transfer and blind transfer; Transfer calls to any extension or mobile phone, make feel free to answer the calls.
Hold the Call	Playing hold music, support editing the music on hold
Multi-level IVR	Multi-level IVR, support different IVR on different time
ACD	Rich call queue functions, assign the calls humanely
CFWD When Busy	When the extension is on phone, forwarding the call to other extensions or outside
	phones(including mobile phone)
Paging&Intercom	Paging and Intercom, making broadcast or notice
DND	Do not disturb
Ring groups	Ringling simultaneously or ringling in order
Three-way Conference	Inviting the third party to attend the conference
Conference Room	Multi-party telephone conferencing, entering the designated conference room for meeting
SIP Trunk Skype Trunk	Making calls using SIP trunk or Skype trunk to reduce the communication costs
Voicemail	Transferring the call into voicemail box when no one accept the call;
	Send the voice message to your own mail box.
Check Status	Checking the status of the extensions or trunk, check the status of FPX9102H;
	Supporting BLF, user can set this on phone to check the status of other extensions.
Call Park	Supporting paring

Function	Explanation
Make/Answer Calls	Free calls between the internal branches, low rates for international long distance calls through Skype or SIP providers.
Transfer	Attended transfer and blind transfer; Transfer calls to any extension or mobile phone, make feel free to answer the calls.
Hold the Call	Playing hold music, support editing the music on hold
Multi-level IVR	Multi-level IVR, support different IVR on different time

**ULTRATIVE HK CO., LIMITED**

E: sales@ultrative.com

T: +86-755-29630367

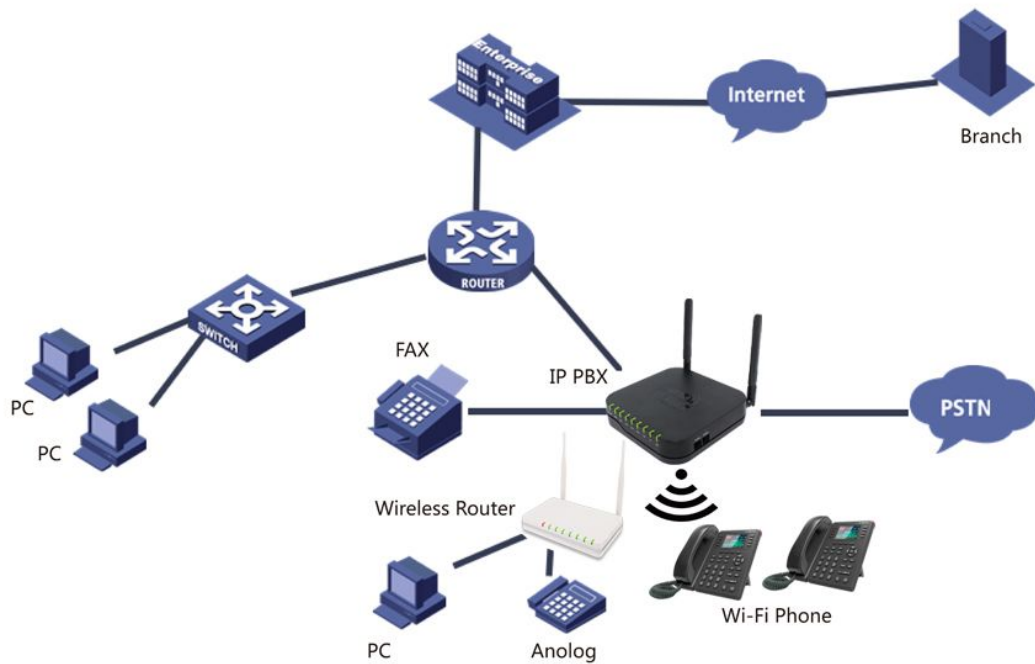
F: +86-755-29685231

<http://www.ultrative.com>

ACD	Rich call queue functions, assign the calls humanely
CFWD When Busy	When the extension is on phone, forwarding the call to other extensions or outside phones(including mobile phone)
Paging&Intercom	Paging and Intercom, making broadcast or notice
DND	Do not disturb
Ring groups	Ringling simultaneously or ringling in order
Three-way Conference	Inviting the third party to attend the conference
Conference Room	Multi-party telephone conferencing, entering the designated conference room for meeting
SIP Trunk Skype Trunk	Making calls using SIP trunk or Skype trunk to reduce the communication costs
Voicemail	Transferring the call into voicemail box when no one accept the call; Send the voice message to your own mail box.
Check Status	Checking the status of the extensions or trunk, check the status of FPX9102H; Supporting BLF, user can set this on phone to check the status of other extensions.
Call Park	Supporting parking

Application Notes

- 1) Wireless Office

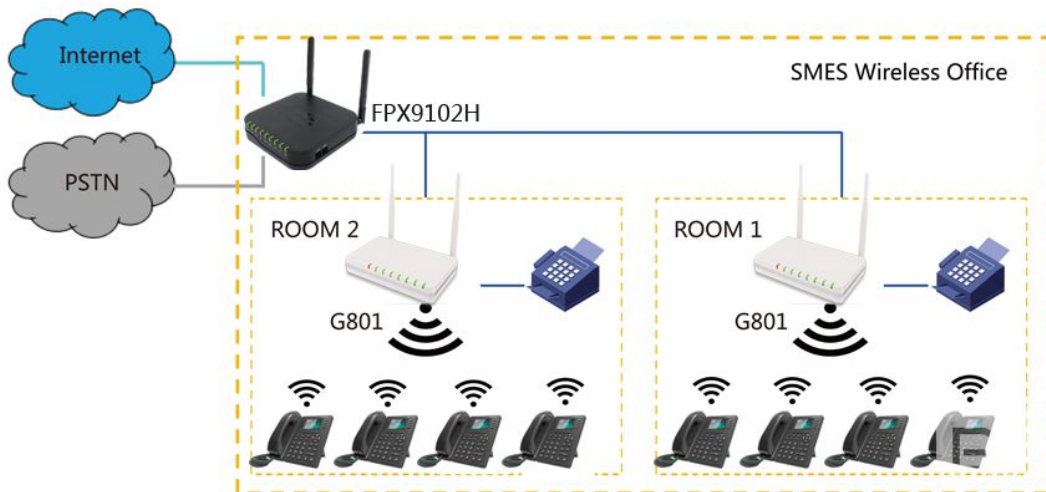


2) SOHO Wireless Office



FPX9102H could support 20 wireless terminals.

3) SMES Wireless Office



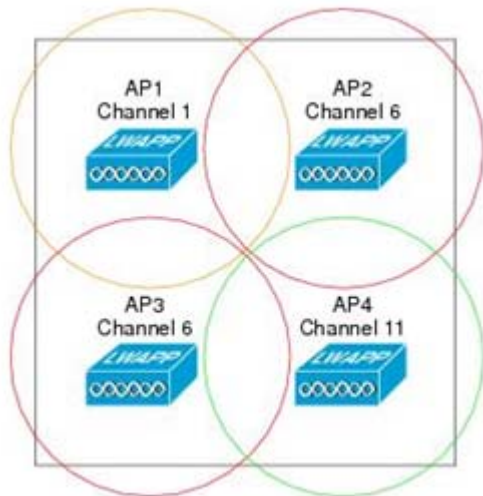
The number of Wireless terminal could be extended to 20-100 through G801.

4) Remote Wireless Office



SIP Trunk of FPX9102H could connect remote office through internet.

5) WiFi Design



- WiFi Signal is above -60dbm at least
- No more than 20 wifi phone per AP
- Different channel and AP for Voice and Data
- Select 1,6,11 channel and Different neighbor channel
- Enable WMM for Voice
- Test Multi Call before Delivery

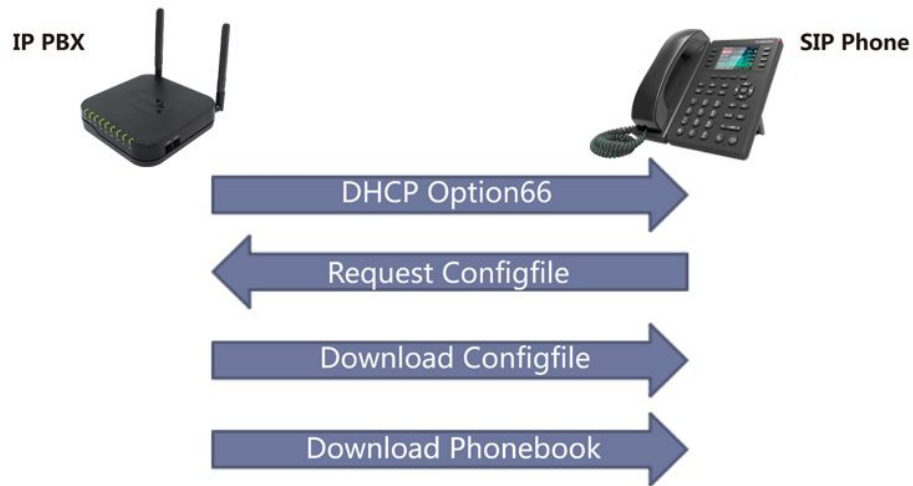
6) WiFi QoS



- WMM(802.11e) could keep QoS under data stream
- Wifi reconnection function
- Finding Best AP to connect
- Comptible with most APs

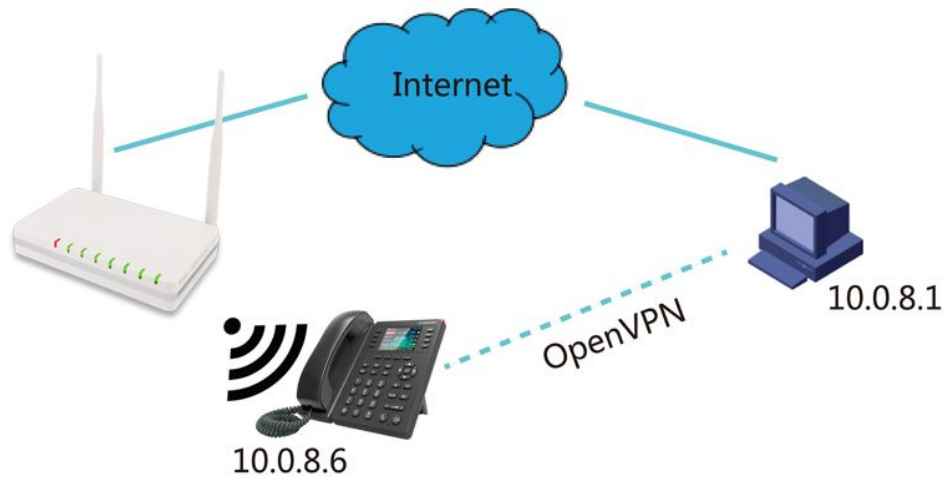
7) Auto-Provision

- Batch Upgrading and configuration under LAN



Batch Upgrading and configuration under LAN

8) OpenVPN



NAT Traversal
Security
Management



